



Work In Progress

SOLUTION FACTSHEET

Work in Progress allows you to issue work orders, develop schedules, and track costs associated with the manufacturing process. This solution provides you with complete control of the manufacturing process and the ability to see up-to-the-minute, work-in-progress information.

The Work in Progress module allows the material required to produce a product to be automatically merged from the corresponding Bill of Materials. All of the required paperwork to move the job through the shop can then be generated from each work order, including travelers, picking sheets, dispatch sheets, and operation tickets. Work in Progress enables you to post material usage and labor in real time and in batch mode. It also enables variance reporting to be produced between estimated costs and actual costs of each job.

Labor transactions can be posted through kit issues, manually or imported into the system from a data collection interface. Material allocations can be issued to a job through kit issues, or manually and optionally allow for the substitution of a material allocation when performing kit issues.

The Benefits of Work in Progress

- Management of production activities in a variety of manufacturing environments
- Monitor and control material, operational costs, production overheads, resources and scrap per job
- Monitoring of job variances between actual and standard
- Analysis of efficiency and utilization of shop floor elements
- Scheduling of jobs according to production calendars
- Identification of overloaded work centers
- Automatic creation of jobs from sales orders, quotations and material requirements planning
- Management of co- and by-product production mistakes
- Verification of warranty date, price and quantity purchased for improved accuracy
- Immediate replacement of cross-shipments for returned goods facilitates improved customer service
- Alerts for invalid RMAs.
- Trial kitting for checking availability of materials/parts, including different versions of changecontrolled parts
- Milestone and subcontract operations
- Multi-level job queries
- Factory documentation and job archiving
- Allocating Work in Progress (WIP) to a branch code facilitates the planning, management, analysis and accounting of production. This functionality further reduces the administrative effort required to split production costs and analyze production data by location or type of production.

Product Version:

SYSPRO 8

Related Modules:

- Inventory
- Purchase Orders
- Sales Orders
- Return Merchandise
- Bill of Materials
- Lot Traceability
- Projects and Contracts
- Product Configurator
- Quotations
- Requirements Planning
- Factory Documentation
- SYSPRO Factory Scheduling
- Accounts Payable
- Assets Register
- Cash Book
- General Ledger
- Activity Based Costing

Sectors:

Manufacturing

Industries:

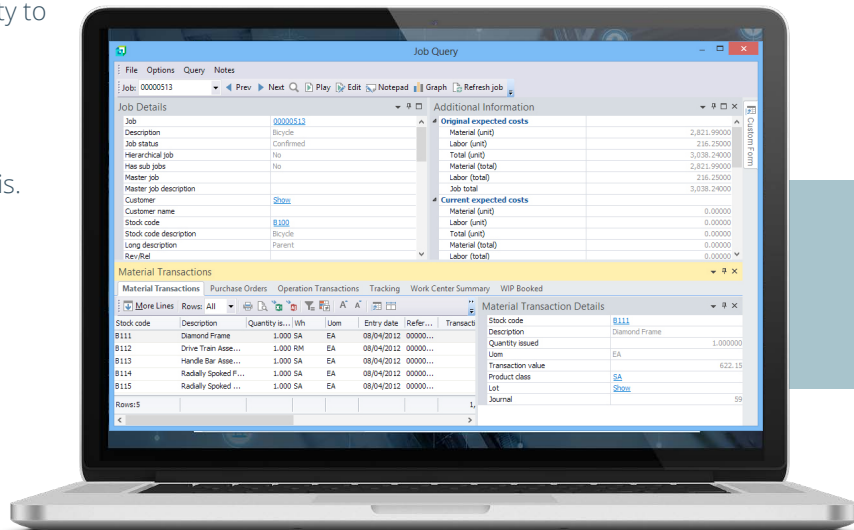
- Automotive Parts and Accessories
- Electronics
- Fabricated Metals
- Food and Beverage
- Industrial Equipment and Machinery
- Packaging
- Plastics and Rubber

Work in Progress Capabilities

- Define work center and productive unit capacity
- Create jobs for standard or custom products
- Issue materials and labor to jobs in kits or by item
- Post labor at standard or actual employee rate
- Import job receipt, labor and timesheet data
- Integrate with bar code data collection systems
- Record costs incurred on sub-contracted operations
- Receive completed items into inspection or directly into inventory
- Create rework jobs as required
- Automatically issue materials when a work order is released, or you can specific issue materials
- You can also use the “backflush” method to issue materials, labor, and overhead when a work order completion is recorded
- Link purchase orders to jobs to expedite receiving
- Determine standards for machines and employees
- Optionally include non-productive time in job costs
- Optionally receive manufactured product into an alternate warehouse, or as a different item
- Create sub-jobs with automatic transfer of values to the master
- Calculate due dates on a forward, backward, finite or manual basis
- Place jobs on hold to suspend processing
- Reserve stock for allocations at the time of confirming a job.
- Reserve and track lot and serialized items for jobs
- Recalculate expected costs
- Archive completed jobs as XML documents
- Companies who have multiple production locations and/or diverse types of production have the ability to set up branches for WIP and specify which WIP branch a job is linked to.

Audit Trails and Reporting

- Complete audit trails of all transactions
- Comprehensive reporting, including percentage completed, detail tracking, job status and job variances
- Provides extensive labor analysis
- Detailed screen query shows current job status, activity to date and expected activity
- Work center dispatch lists
- Non-productive time and scrap analysis
- Work center, employee and machine efficiency analysis.



Contact Us

To learn more about our company, products and services visit www.syspro.com